

### Features

- Variable displacement vane pump
- Spring governed pressure compensator design provides low compensator leakage, contamination resistance, quick response and cost effective
- Low vibration and noise level
- Standard with maximum volume adjustment screw
- Both NPT threaded and 4-Bolt Flange pattern on pressure port



### Ordering Details

P	Pump																								
V	Variable																								
V	Vane																								
16-	CC, Centimeters <sup>3</sup> /rev.: 8, 12, 16																								
PR-	Controller: <table border="1" style="margin-left: 20px;"> <thead> <tr> <th>Code</th> <th>Description</th> </tr> </thead> <tbody> <tr> <td>PR</td> <td>Pressure Compensator</td> </tr> </tbody> </table>	Code	Description	PR	Pressure Compensator																				
Code	Description																								
PR	Pressure Compensator																								
9T.6-	Shaft: <table border="1" style="margin-left: 20px;"> <thead> <tr> <th colspan="4">Woodruff Key</th> </tr> <tr> <th>Code</th> <th>Shaft Dia., in.</th> <th>Key Width, in.</th> <th>CC/rev</th> </tr> </thead> <tbody> <tr> <td>W.75</td> <td>0.750</td> <td>0.187</td> <td>8, 12, 16</td> </tr> </tbody> </table> <table border="1" style="margin-left: 20px;"> <thead> <tr> <th colspan="4">Spline</th> </tr> <tr> <th>Code</th> <th>Shaft Dia.</th> <th>Details</th> <th>CC/Rev</th> </tr> </thead> <tbody> <tr> <td>9T.6</td> <td>0.625</td> <td>9T 16/32</td> <td>8, 12, 16</td> </tr> </tbody> </table>	Woodruff Key				Code	Shaft Dia., in.	Key Width, in.	CC/rev	W.75	0.750	0.187	8, 12, 16	Spline				Code	Shaft Dia.	Details	CC/Rev	9T.6	0.625	9T 16/32	8, 12, 16
Woodruff Key																									
Code	Shaft Dia., in.	Key Width, in.	CC/rev																						
W.75	0.750	0.187	8, 12, 16																						
Spline																									
Code	Shaft Dia.	Details	CC/Rev																						
9T.6	0.625	9T 16/32	8, 12, 16																						
2A-	Mounting Flange: <table border="1" style="margin-left: 20px;"> <thead> <tr> <th>Code</th> <th>Flange</th> <th>CC/Rev</th> </tr> </thead> <tbody> <tr> <td>2A</td> <td>SAE A, 2-BOLT</td> <td>8, 12, 16</td> </tr> </tbody> </table>	Code	Flange	CC/Rev	2A	SAE A, 2-BOLT	8, 12, 16																		
Code	Flange	CC/Rev																							
2A	SAE A, 2-BOLT	8, 12, 16																							
N.5	Pressure Port: N.5 = 1/2" NPTF (Includes code F1- 1/2" 4 bolt mounting pattern)																								
N.75	Suction Port: N.75 = 3/4" NPTF																								
S-	Port Location: S=Side																								
R-	Rotation: R= Right Hand (CW)																								
B-	Pressure adjustment range: <table border="1" style="margin-left: 20px;"> <thead> <tr> <th>Code</th> <th>Pressure Range PSI (Bar)</th> </tr> </thead> <tbody> <tr> <td>B</td> <td>218-507 (15-35)</td> </tr> <tr> <td>C</td> <td>435-797 (30-55)</td> </tr> </tbody> </table>	Code	Pressure Range PSI (Bar)	B	218-507 (15-35)	C	435-797 (30-55)																		
Code	Pressure Range PSI (Bar)																								
B	218-507 (15-35)																								
C	435-797 (30-55)																								
0	Frame: 0																								

Example Part Number: PVV16-PR-9T.6-2A-N.5N.75S-R-B-0

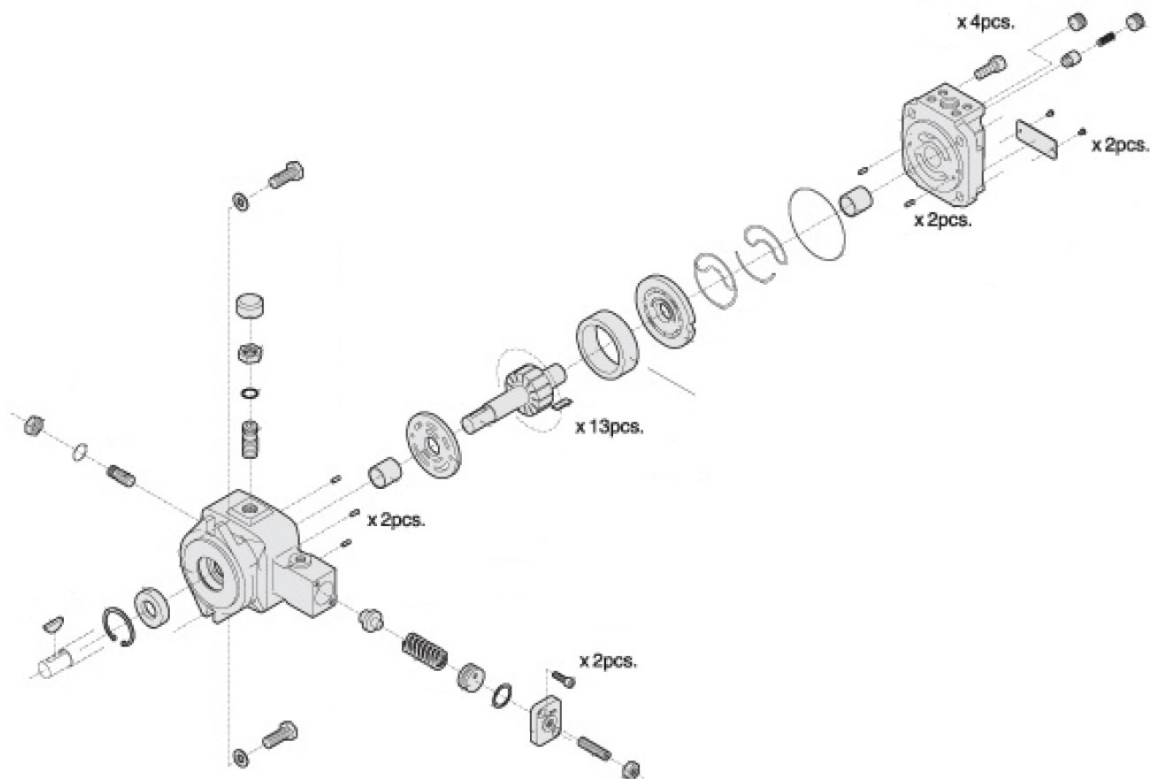
**Technical Specifications:**

<b>Displacement</b>	<b>CC/rev</b>	<b>8</b>	<b>12</b>	<b>16</b>
	<b>in<sup>3</sup>/rev</b>	0.488	0.732	0.976
<b>Oil Flow at Pump rotation of 1800 rpm</b>	<b>LPM</b>	14.4	21.6	28.8
	<b>GPM</b>	3.8	5.7	7.6

<b>Maximum Speed (continuous)</b>	<b>rpm</b>	1800	1800	1800
<b>Minimum Speed</b>	<b>rpm</b>	800	800	800
<b>Max. Pressure (continuous)</b>	<b>bar</b>	55	55	55
	<b>psi</b>	798	798	798
<b>Maximum Case Pressure</b>	<b>bar</b>	0.7	0.7	0.7
	<b>psi</b>	10	10	10
<b>Maximum Inlet Vacuum at Sea Level</b>	<b>in. Hg</b>	5	5	5
	<b>Bar (abs)</b>	0.8	0.8	0.8
<b>Recommended Filtration</b>		20/18/15 to ISO 4406		
<b>Recommended Oil Viscosity</b>	<b>mm<sup>2</sup>/sec (SUS)</b>	16-36 (80-170) {Cold start < 1600mm <sup>2</sup> /sec for < 3min}		
<b>Recommended Temp. Range</b>	<b>°C (°F)</b>	-25 to 82 (-13 to 180)		
<b>Recommended Fluid</b>		Mineral based oil, VG46		

<b>Weight</b>	<b>kg</b>	8.6	8.6	8.6
	<b>lbs.</b>	19	19	19

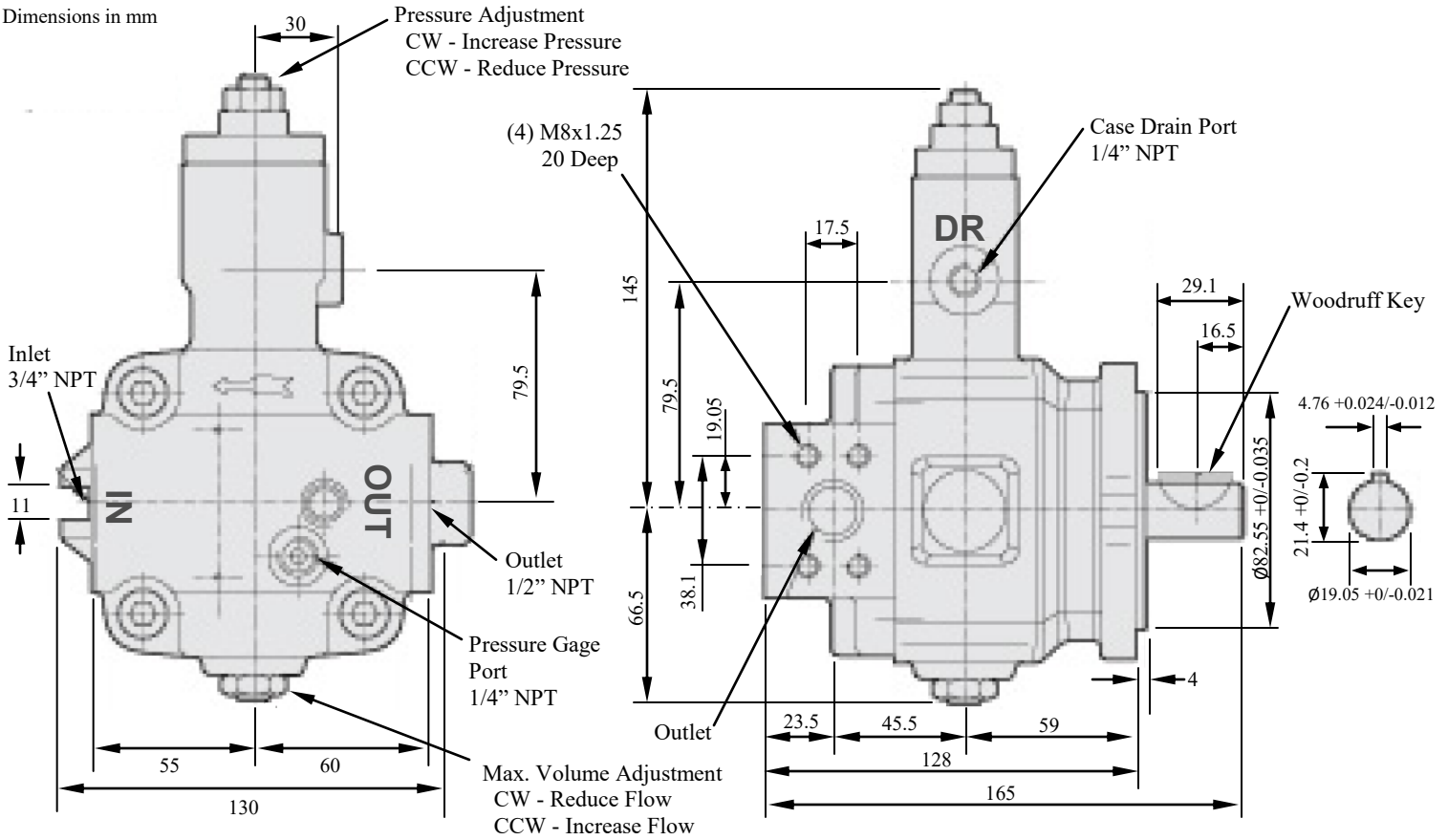
**Note: Fill case drain port with oil before operation.**



**Dimensions:**

**8, 12, 16cc, Woodruff Key Shaft:**

Dimensions in mm



**8, 12, 16cc, Spline Shaft:**

